

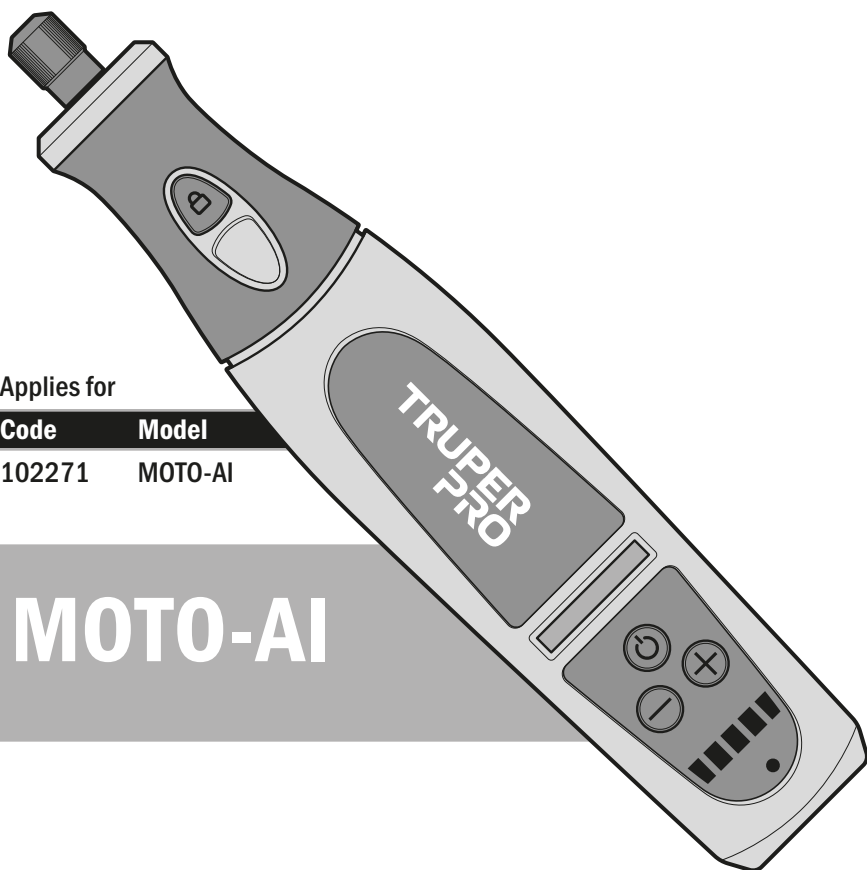
ENGLISH
ESPAÑOL

TRUPER PRO

Manual

Cordless rotary-tool

7.2 V 



Applies for

Code	Model
102271	MOTO-AI

MOTO-AI



CAUTION

Read this manual thoroughly
before using the tool.



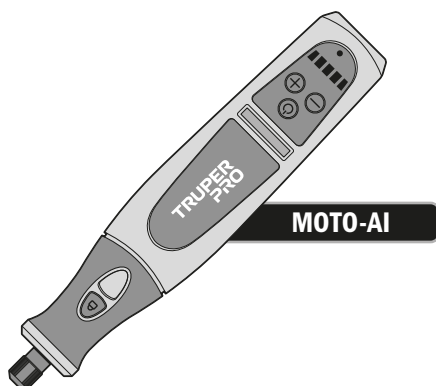
Technical data	3
Power requirements	3
 General power tool safety warnings	4
 Safety warnings for rotary tools	5
Parts and accessories	7
Startup	8
Maintenance	11
Environmental protection	11
Notes	12
Authorized service centers	13
Warranty policy	14

CAUTION

To gain the best performance of the tool, prolong the duty life, make the Warranty valid if necessary, and to avoid hazards of fatal injuries please read and understand this Manual before using the tool.

Keep this manual for future references.

The illustrations in this manual are for reference only. They might be different from the real tool.



MOTO-AI

Code	•	102271
Description	•	Cordless rotary-tool
Voltage	•	7.2 V ===
Speed	•	5 000 RPM - 25 000 RPM
IP Grade	•	IP20
Clamp	•	1/8"
Rechargeable Battery	•	Voltage: 7.2 V === Capacity: 0.9 Ah Type: Ion-Lithium
Charger	Input	Voltage: 127 V~ 60 Hz 0.2 A
	Output	Voltage: 9 V=== 0.5 A

Power Cord Grips used in this product: Type "Y".
Tool Build Quality: Reinforced insulation

⚠ WARNING Avoid the risk of electric shock or severe injury. When the power cable gets damaged it should only be replaced by the manufacturer or at a TRUPER Authorized Service Center. The build quality of the electric insulation is altered if spills or liquid gets into the tool while in use. Do not expose to rain, liquids and/or dampness.

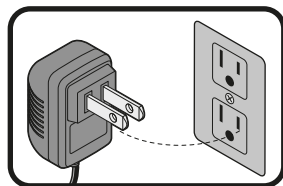
⚠ WARNING Before gaining access to the terminals all power sources should be disconnected.



Power requirements

⚠ WARNING Tools with double insulation and reinforced insulation eliminate the need of a grounded power cord with three prongs or a grounded power connection.

⚠ WARNING When using an extension cable, verify the gauge is enough for the power that your product needs. A lower gauge cable will cause voltage drop in the line, resulting in power loss and overheating. The following table shows the right size to use depending on cable's length and the ampere capability shown in the tool's nameplate. When in doubt use the next higher gauge.



Ampere Capacity	Number of Conductors	Extension Gauge	
		From 6 ft to 49 ft	Higher than 49 ft
From 0 and up to 10 A	3 (one grounded)	18 AWG (*)	16 AWG
From 10 and up to 13 A		16 AWG	14 AWG
From 13 and up to 15 A		14 AWG	12 AWG
From 15 and up to 20 A		8 AWG	6 AWG

* It is safe to use only if the extensions have a built-in artifact for over current protection.

AWG = American Wire Gauge - Reference NMX - J - 195 - ANCE

⚠ WARNING When operating power tools outdoors, use a **⚡VOLTECK** grounded extension cable labeled "For Outdoors Use". These extensions are especially designed for operating outdoors and reduce the risk of electric shock.





General power tool safety warnings



WARNING! Read all safety warnings, instructions, illustrations, and specifications provided with this power tool. Failure to follow all instructions listed below may result in electric shock, fire, and/or serious injury. **Keep all warnings and instructions for future reference.**

Work area

Keep your work area clean, organized, and well-lit.



Cluttered and dim areas can lead to accidents.

Do not operate the tool in explosive atmospheres, such as in the presence of flammable liquids, gas, or dust.



The electric tools produce sparks that can ignite flammable material.

Keep children and other individuals at a safe distance while using the equipment.



Distractions can cause loss of control and lead to accidents.

Electrical Safety

The tool plug must match the outlet. Never modify a plug. Do not use any type of adapter for grounded tool plugs.



Modified plugs and different outlets increase the risk of electrical shock.

Avoid body contact with grounded surfaces such as pipes, radiators, electric stoves, and refrigerators.

There is an increased risk of electrical shock if the body is grounded.

Do not expose the tool to rain or humid conditions.

Water entering the tool increases the risk of electrical shock.

Do not force the cable. Never use the cable to transport, lift, or disconnect the tool. Keep the cable away from heat, oil, sharp edges, or moving parts.

Damaged or tangled cables increase the risk of electrical shock.

When using a tool outdoors, use a specially designed outdoor extension cord.

Using an appropriate outdoor extension cord reduces the risk of electrical shock.

If using the tool in a damp location is unavoidable, use a power supply protected by a ground fault circuit interrupter (GFCI).

Using a GFCI reduces the risk of electrical shock.

Personal Safety

Be alert, watch what you are doing, and use common sense when handling an electrical tool. Do not use it if you are tired or under the influence of drugs, alcohol, or medication.

A moment of distraction while using the tool can cause personal injury.

Use safety equipment. Always wear eye protection.

The use of safety equipment such as safety glasses, dust mask, slip-resistant shoes, helmet, and ear protection in appropriate conditions significantly reduces the risk of personal injury.



Avoid accidental starts. Ensure the switch is in the "off" position before connecting to the power source and/or the battery or transporting the tool.

Carrying power tools with your finger on the switch or connecting power tools with the switch in the "on" position can cause accidents.

Remove any wrenches or adjusting tools before starting the power tool.

Wrenches or tools left on the rotating parts of the tool can cause personal injury.

Do not exceed your range of motion. Keep both feet firmly planted on the ground and always maintain balance.

This allows better control of the tool in unexpected situations.

Dress appropriately. Do not wear loose clothing or jewelry. Keep your hair, clothing, and gloves away from moving parts.



Loose clothes, jewelry or long hair may get caught in moving parts.

If dust extraction and collection devices are available for the tool, check their connections and use them correctly.

The use of these devices reduces risks associated with dust.

Tool use and care

Do not force the tool. Use the appropriate tool for the task at hand.



The right tool performs better and is safer when used at the intended pace.

Do not use the tool if the switch is not functioning.

Any power tool that cannot be turned on or off is dangerous and must be repaired before operation.

Before adjusting, changing accessories, or storing the power tool, disconnect the plug from the power source, and/or remove the batteries if they are detachable.

These measures reduce the risk of accidentally starting the tool.

Store the tools out of the reach of children and do not allow them to be handled by individuals unfamiliar with the tools or their instructions.



Power tools are dangerous in untrained hands.

Maintain the tool. Ensure that the moving parts are not misaligned or jammed, and that there are no broken parts or other conditions that may affect its operation. Repair any damage before using the tool.



Many accidents are caused by inadequate tool maintenance.

Keep cutting accessories sharp and clean.

Well-maintained cutting accessories are less likely to jam and easier to control.

Use the tool, its components, and accessories in accordance with these instructions and as intended for the type of tool, in appropriate working conditions.

Using the tool for applications other than those for which it is designed could cause a hazardous situation.

Service

Have your power tool repaired by a qualified person using only identical replacement parts.

This will ensure the safety of the power tool.

Use and care of the battery-powered tool

Only recharge with the charger specified by TRUPER.

Using the charger specified for one battery with another battery can cause a fire hazard.

Use batteries specifically designed for the tool.

Using any other battery can cause damage and fire hazard.



When the battery is not in use, keep it away from any metal objects such as clips, coins, keys, nails, screws, or any metal object that can make a connection between the terminals.

A short circuit between the terminals can cause burns or fire.

Under severe conditions, battery liquid may spill; avoid contact. If there is accidental contact, wash the area with water. If there is contact with the eyes, seek medical attention.

Spilled liquid can cause irritation or burns.

Select the right accessory

CAUTION • Select the accessory best suited for the material. It reduces the risk of severe injury and makes the job faster.

Before operating the tool

- Take a few minutes to assess the job. Before operating the tool double-check all the necessary caution standards.
- Adjust all the accessories before connecting the rotary tool.

DANGER • Make sure the switch is off, otherwise it will start working unexpectedly, which could cause serious injury.

- Avoid injury or deficient performance. To stay in control while operating the tool keep it supported with a vice or wrench.

- Double-check there are no embedded objects such as cables, electric conductors or pipes before boring a wall, floor or ceiling.

- Always wear eye protection. Accessories may brake and shoot out with great speed.



WARNING • Under severe conditions, battery liquid can spill; avoid contact. If you accidentally come into contact with the skin, wash immediately with water. If the liquid gets into the eyes, seek medical assistance.

DANGER • Spilled battery fluid can cause irritation or burns.

While operating the tool

- Keep your hands away from the moving accessories.
- Let the accessory develop its highest speed before making contact with the work piece.

- Never start the tool when the accessory is inside the work piece material.

- When carving, milling or cutting use special attention to the direction you work the material. To prevent from kickback push the accessory towards the shooting shavings.

- If the accessory gets stuck into the work piece, immediately turn off the tool, disconnect, and then release the stuck material.

- Refrain from touching the accessories or collets after use. They are very hot.

- Before setting the tool, verify all moving parts have come to a complete stop.

- Immediately after using, refrain from setting the tool onto a place with particles and / or dust. The particles and dust may be absorbed into the mechanism and damage the tool.

- Do not modify or use the tool incorrectly.

- Rotary tool IS NOT designed to be used neither as a dental drill nor for medical applications.

Kickback

CAUTION • Kickback is a sudden reaction to a pinched or snagged rotating wheel, backing pad, brush or any other accessory. Pinching causes rapid stalling of the rotating accessory which in turn causes the uncontrolled power tool to be forced in the direction opposite of the accessory's rotation at the point of the binding. Kickback is the result of power tool misuse and/or incorrect operating procedures or conditions and can be avoided by taking proper precautions as given below.

- Maintain a firm grip on the power tool and position your body and arm to allow you to resist kickback forces. Always use auxiliary handle, if provided, for maximum control over kickback or torque reaction during startup. The operator can control torque reactions or kickback forces, if proper precautions are taken.

- Never place your hand near the rotating accessory. Accessory may kickback over your hand.

- Do not position your body in the area where power tool will move if kickback occurs. Kickback will propel the tool in direction opposite to the wheel's movement at the point of snagging.

- Use special care when working corners, sharp edges etc. Avoid bouncing and snagging the accessory. Corners, sharp edges or bouncing have a tendency to snag the rotating accessory and cause loss of control or

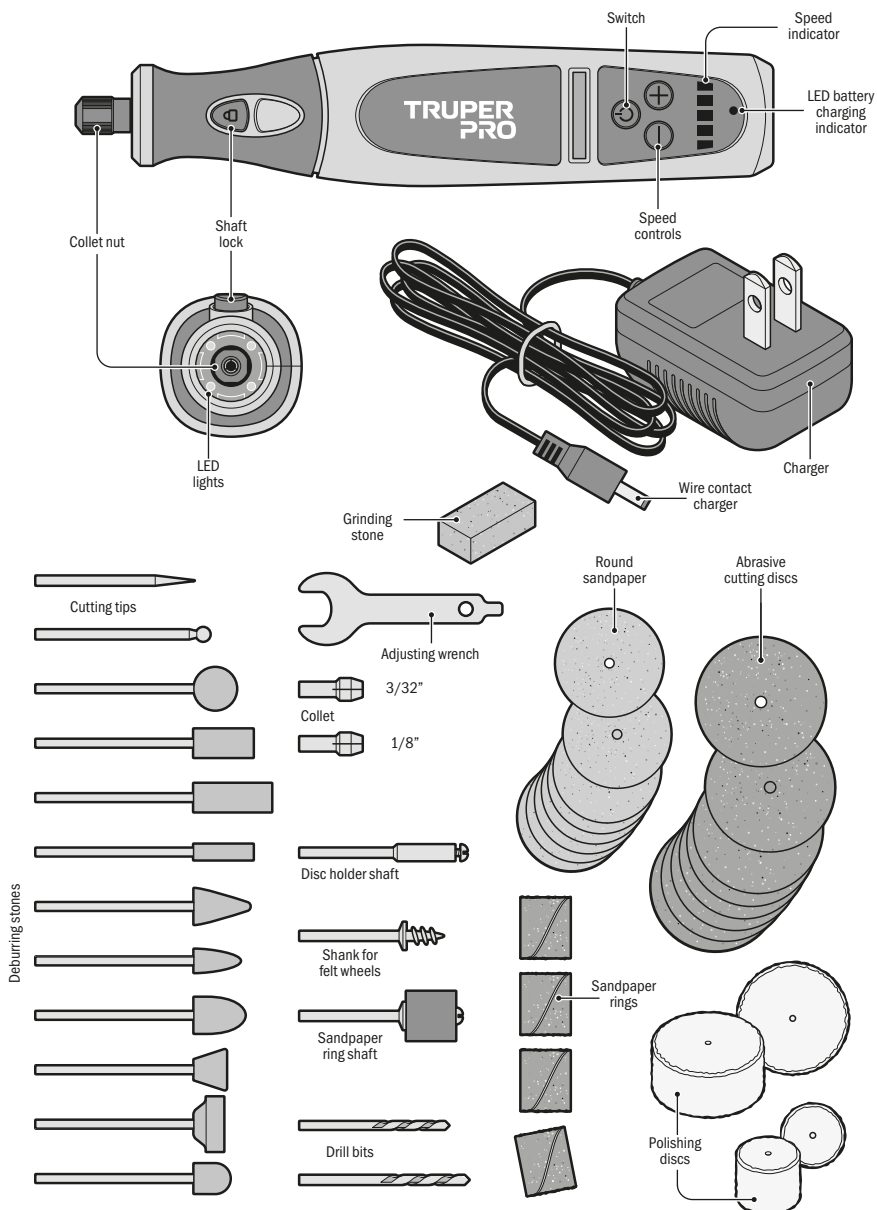
Charging the Rotary Tool

- Misusing the charger may cause damages.
- Regularly check the charger is not damaged, especially the connector cable and the housing.
- Do not use the charger if it was submitted to knocks or discharge. Go to a TRUPER Authorized Service Center to repair before using it.
- For no reason at all disassemble the charger. Repairs shall only be carried out by TRUPER Authorized Service Center staff. Improper assembly may cause fire or electric shock.
- Never use the charger in places where explosive or flammable materials are present.
- Connect the charger only to household power outlet. Do not connect the charger if the power outlet has a different voltage tension different to the one indicated in the specifications label.
- A faulty electric installation or excessive tension in the power outlet may originate an electric discharge.
- Connect the charger into a power outlet with easy access to be able to disconnect quickly in case of fault.
- Not charging the rotary tool correctly may damage the battery, the charger and the rotary tool.
- Charge the rotary tool in a 32 °F to 113 °F environment. Ideal environment temperature is 73 °F
- Double check the ventilation is adequate when charging the batteries. In this process gases are released.
- Charge the rotary tool inside. Do not charge outdoors.
- Check the charger is not in humid environment.
- Otherwise there is risk of electric shock.
- Do not use the rotary tool for purposes different from its designed. The charger is only built to charge the rotary tool. Different uses may result in fire or fatal electric shock.
- Do not try to charge the rotary tool with a charger that is different from the one supplied.
- Use the charger only to charge the rotary tool and not as power supply while operating the rotary tool.
- Do not set object onto the charger. Do not cover, because it overheats. Never set it close to heat sources.
- Set the power cable in a way that nobody will trip with it or step on it.
- After charging the rotary tool always disconnect the charger from the power supply.
- Never pull or disconnect the charger using the connection cable.
- Preferably, avoid using extension cables. If absolutely necessary using an extension cable double check the electric requirement mentioned in page 3 are observed.
- Never set the rotary tool or the accessories onto or near hot surfaces.



Parts and accessories

TRUPER
PRO



- Before using the rotary tool please learn about all its application possibilities.
- Rotary tool is a high-speed, efficient, versatile and easy to handle manual tool. It is designed to polish, cut, grind, strip, sand, bore, make holes, brush, clean, etc.
- It has a small but powerful motor, equipped with a speed selector allowing to operate from 5 000 RPM up to 25 000 RPM. With a comfortable in the hand design accepts a large variety of accessories including high speed abrasive cutting discs, silicon carbide grinding stones, tungsten carbide cutters, high-speed wire discs, polishing tips, embossing and cutting tips, sanding discs, bits and other accessories.
- These accessories have different sizes and shapes allowing a large scope of jobs.

Rotary Tool Battery Charging

- Charge the rotary tool if it is completely discharged; the sample turns on and off rapidly without generating any load.
- When using an Ion-Lithium rechargeable battery, the rotary tool may be charge at any moment no matter the charge level and with no capacitance loss.
- The rotary tool has low battery charge when purchased. It shall be charged before the first use:

1. Insert the cable contact plug **(b)** in the rotary tool battery charge connection **(c)**.

2. Plug the charger plug into a 127V~ outlet. The LED indicator **(a)** should turn red, indicating that charging has started. When the battery is fully charged, the red light will turn green.

3. Disconnect the charger from the power outlet after charging is complete.

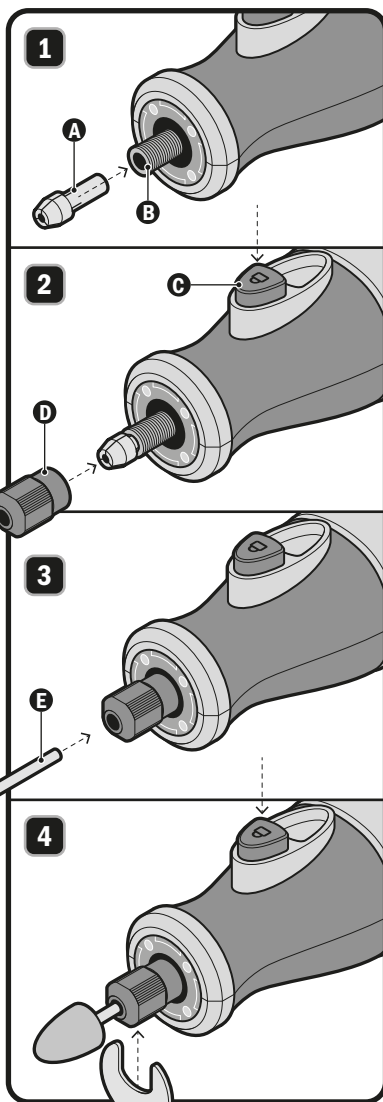
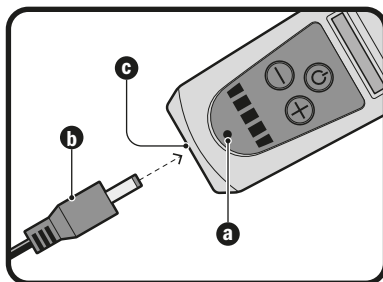
4. Remove the charger cable from rotary tool battery charge connection.

5. Give the rotary tool time to cool down in environment temperature if getting hot during the charge process. You can now operate the rotary tool.

If the green light stays on, it is a sign of the following conditions:

1. The battery temperature is lower than 0 °C or higher than 45 °C ; please wait until the battery temperature is in the proper range to be able to charge.

2. The battery or the tool is defective; you must go to a TRUPER Authorized Service Center.



Installing accessories

- Verify that the tool is turned off.

1. Insert a jaw **(A)** of the desired gauge for the axis accessory into the rotary tool axis **(B)**.

2. Depress the shaft lock **(C)** while threading but not tightening the jaws chuck **(D)**.

3. Insert the accessory **(E)** you need into the jaws. Never try to force entry of the accessory. Better, change the jaws and use a larger caliber.

4. Pressing the shaft lock use a collet wrench to tighten the collet chuck and have the collet securing the accessory. Verify the accessory is not loose in the tightened jaws. In which case, change it for a lower caliber.

- To remove the accessory, press the shaft lock while loosening the collet.

⚠ WARNING Do not press the shaft lock while the tool is running.

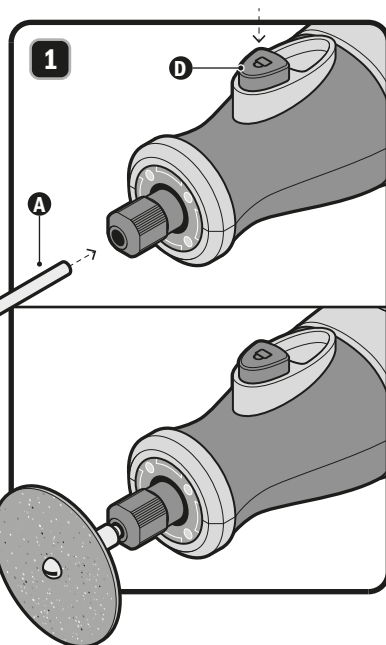
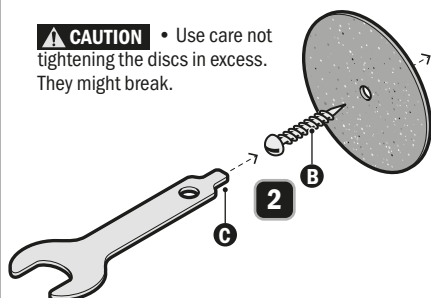
Disc holder shaft

- The disc holder is used with serrated cutting discs and abrasive discs.

1. Fit the disc holder (A) into the rotary tool as you do the other accessories. (See page 8).

2. Using the screw (B), secure the disc you need, firmly tightened with the screwdriver tip in the accessory adjusting wrench (C). While tightening the disc, keep the shaft lock depressed (D).

⚠ CAUTION • Use care not tightening the discs in excess. They might break.

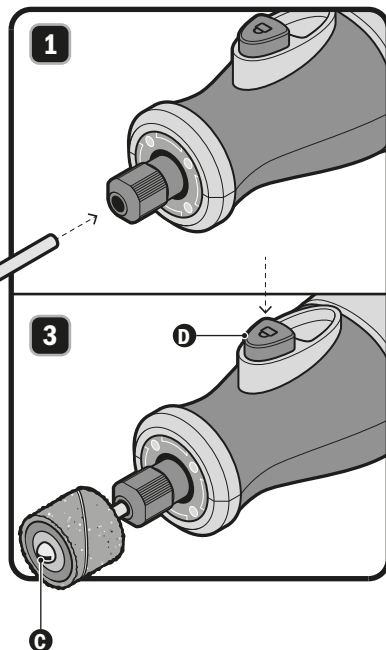
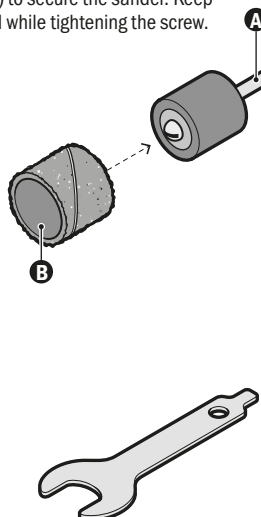


Sandpaper ring shaft

1. Insert the sandpaper ring (A) in the grain sander (B) more suitable for the job.

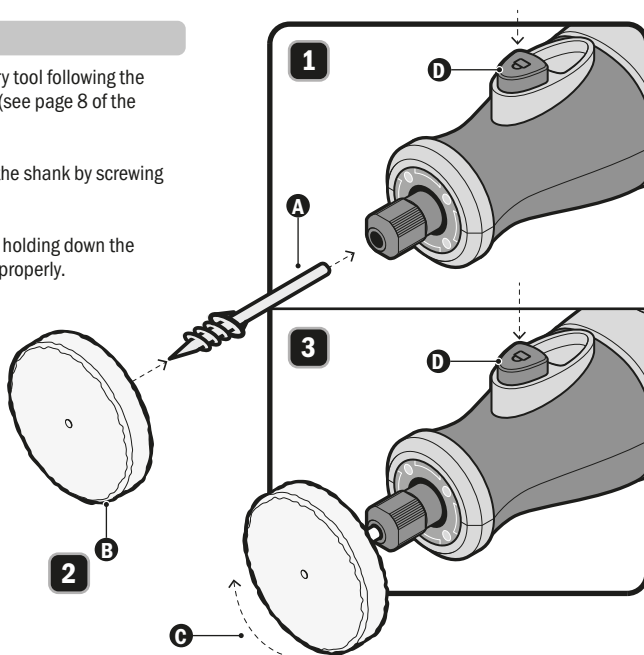
2. Install the stud in the Moto - Tool as you do for the other accessories. (See page 8).

3. Tighten the stud screw (C) to secure the sander. Keep the shaft locked (D) pressed while tightening the screw.



Polishing disc shaft

1. Attach the shank (A) to the rotary tool following the same procedure as for other tools (see page 8 of the manual).
2. Attach the polishing disc (B) to the shank by screwing it on.
3. Turn it firmly clockwise (C) while holding down the spindle lock (D) to secure the disc properly.



Startup

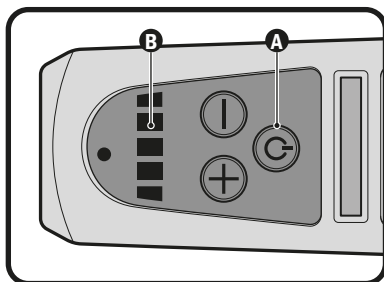
On/Off Switch

- To start the tool, press the on/off switch (A).
- To stop the tool, press the on/off switch again.

CAUTION • This tool has been set to the slowest speed before switching on.

Speed Adjustment

- To achieve the best result when working with different materials, you can adjust the tool speed with the variable speed control button. Press the “+” speed button to increase the speed and press the “-” speed button to decrease the speed.
- Select a low speed when working with wood, plastics and polishing.
- The 5 LEDs (B) indicate the 5 levels of speed, the speed is corresponding from 5 000 to 25 000 RPM



Drilling Operation

- Turn the tool on to full speed. Apply the tool to the workpiece gently.

CAUTION Apply light pressure on the tool. Excessive pressure will only cause a poor finish and overloading of the motor.

Holding the Tool

- For milling or engraving, hold the tool like a pen. Take care not to cover the ventilation slots.

CAUTION The tool will get warm during normal operation. Observe the rated operating time.

- The rotary tool uses a high-grade lubricant. It ensures lubrication the tool's full working life when used in regular conditions. Does not need further lubrication.
- Inspect regularly all the mounting screws and double-check they are tightly secured. Loose screws present a high risk.

Cleaning and Storage

- Do not use aggressive cleaning products, metal brushes, sharp or metal utensils, otherwise the rotary tool housing gets damaged.
 - Clean the housing with a soft and dry cloth.
 - Remove dirt with a humid cloth and mild detergent.
 - Never submerge the rotary tool in water or other type of liquids.
 - Dry the rotary tool thoroughly before storing.
 - Load the battery full before storing the rotary tool for long periods of time. Storing unloaded batteries or partially discharged may cause a deep discharge. This, destroys the batteries cells and makes them useless.
 - Store the rotary tool out of the reach of children.
- Keep it in a locked placed with a storing temperature ranging between 41 °F and 68 °F

Service and repairs

- In the event the tool is not working properly go to an TRUPER Authorized Service Center.
- Service and repairs should only be made in a TRUPER Authorized Service Center. Service and maintenance performed by non-qualified people may be dangerous and can lead to personal injuries. It also makes the product Warranty void.
- Use only original TRUPER spare parts. Otherwise there you may be exposed to accidents and make the Warranty void.

Environmental protection

Power tools and batteries should not be disposed off together with household trash. Please deliver this tool and the batteries to its adequate recycling in the authorized disposal sites. Verify the nearest recycling center in your community.